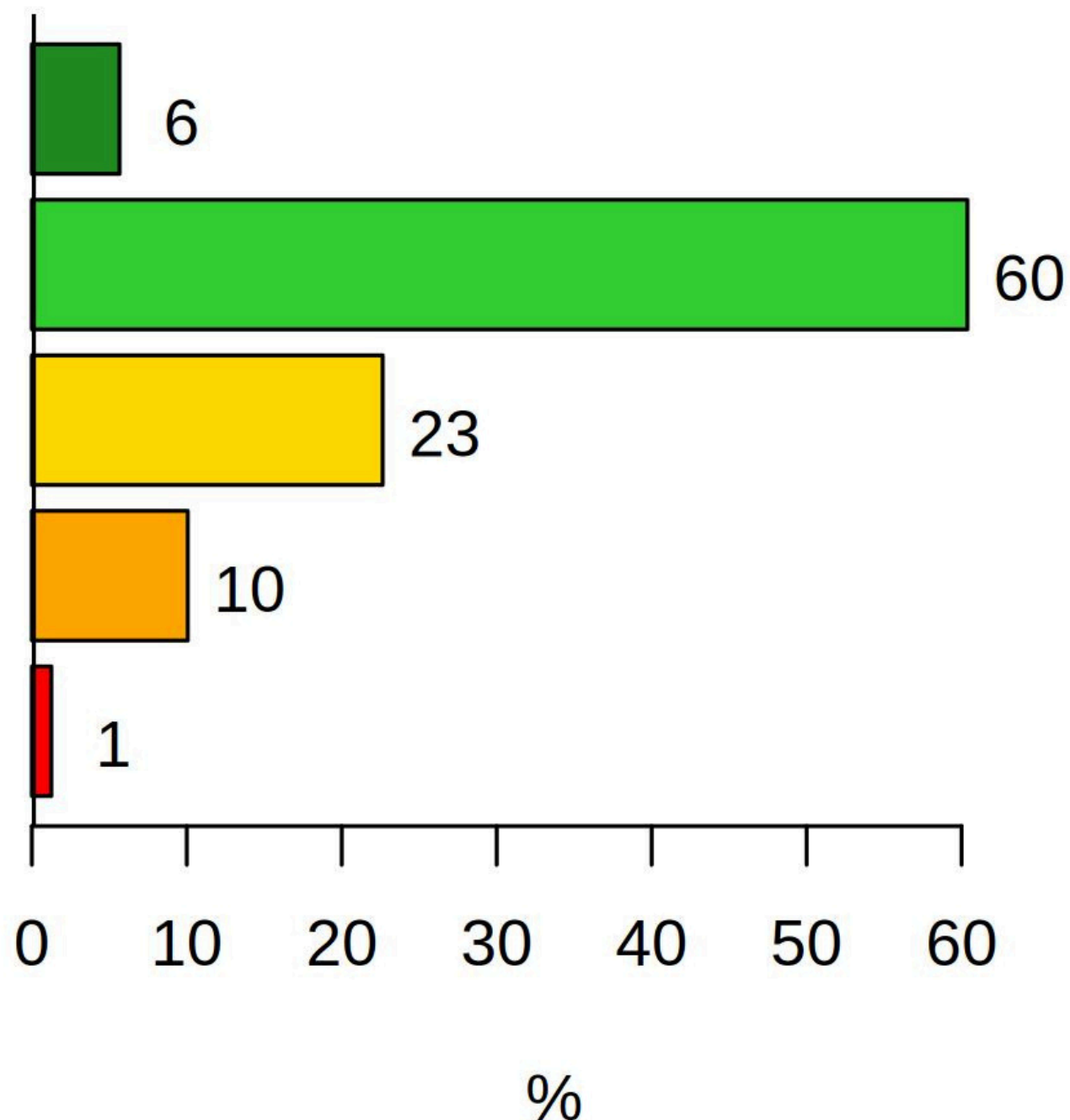
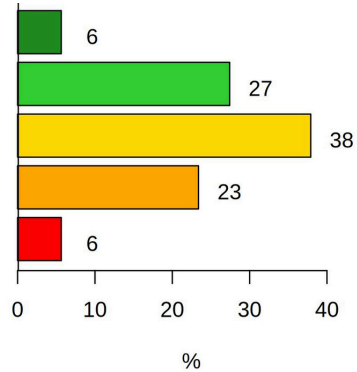


# Zufriedenheit mit ÖPNV-Angebot Potsdam N 159 durchsch. 3.6 Sterne

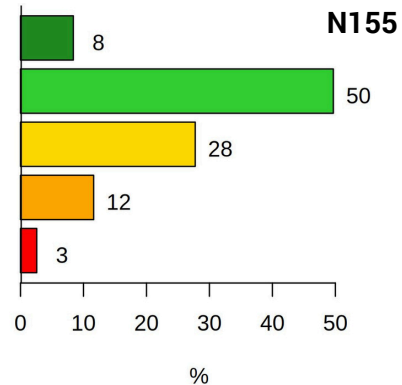


# So bewertet Potsdam den ÖPNV

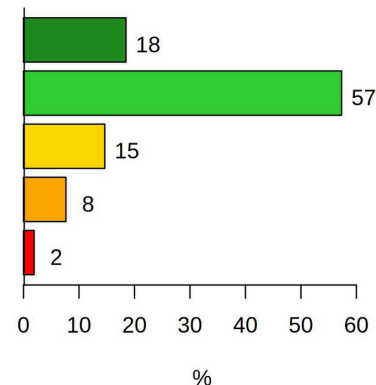
### Barrierefreiheit N124



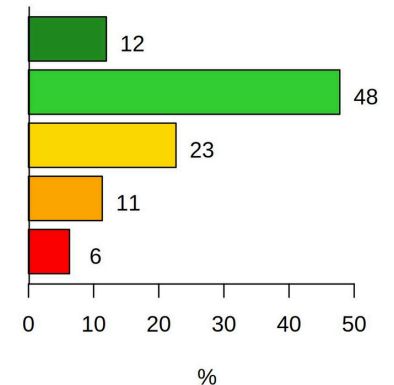
### Freundlichkeit des Personals N155



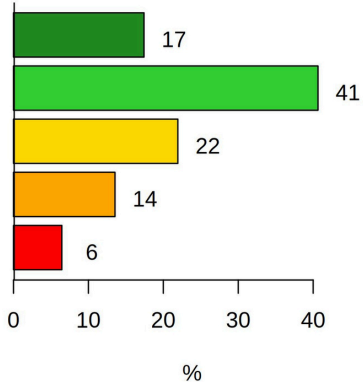
### Sicherheit N157



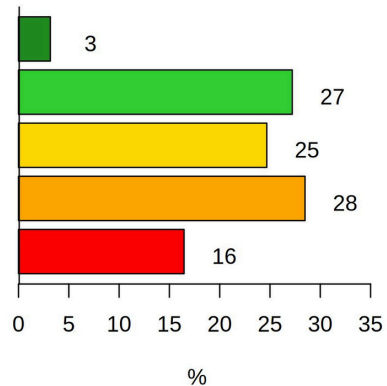
### Sauberkeit N159



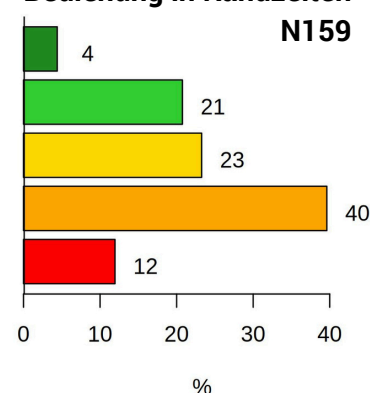
### Preis N155



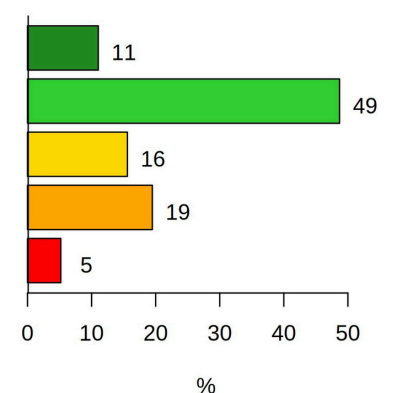
### Anschlussicherheit N158



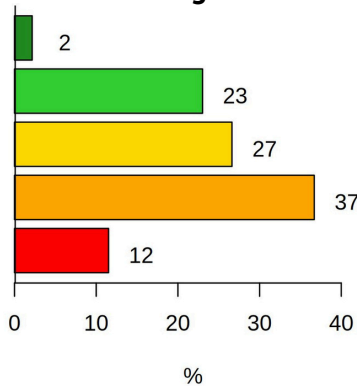
### Bedienung in Randzeiten N159



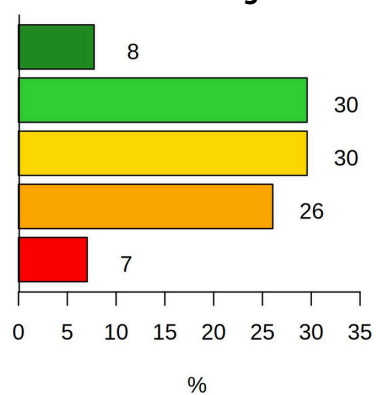
### Anzahl der Fahrten N154



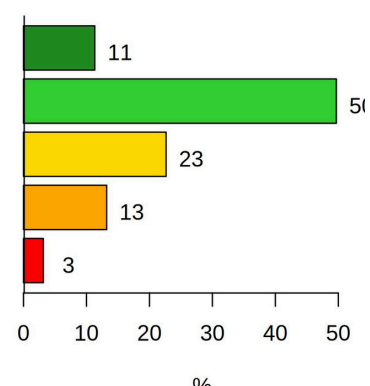
### Mitnahmemöglichkeiten N139



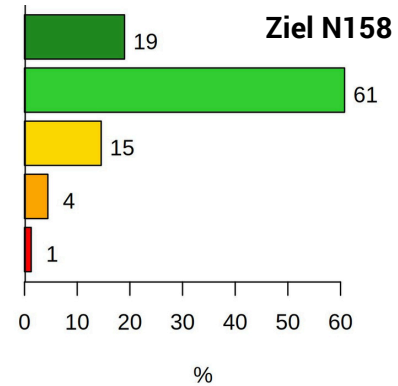
### Kombinationsmöglichkeiten N142



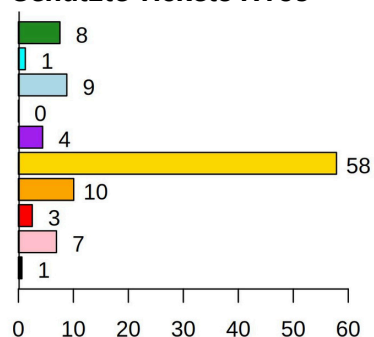
### Dauer der Fahrt N159



### Erreichbarkeit von Start und Ziel N158



### Genutzte Tickets N159



### Gründe für die ÖPNV-Nutzung N157

