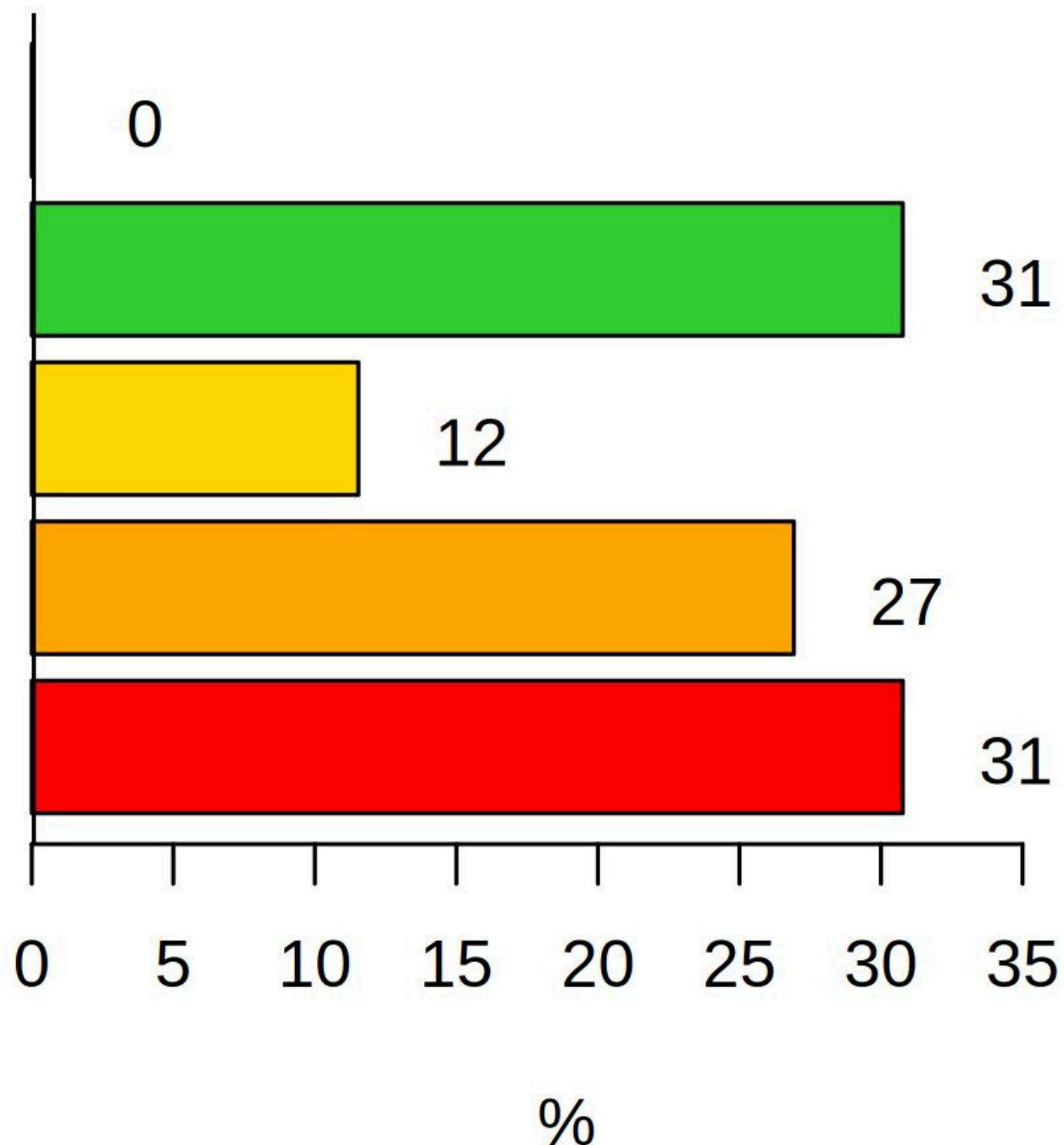


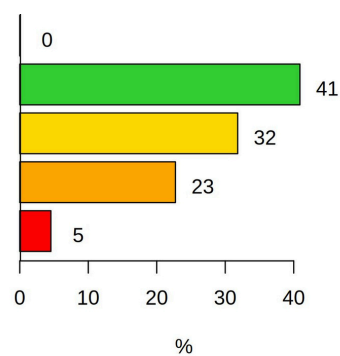
Zufriedenheit mit ÖPNV-Angebot Märkisch-Oderland N 26 durchsch. 2.4 Sterne



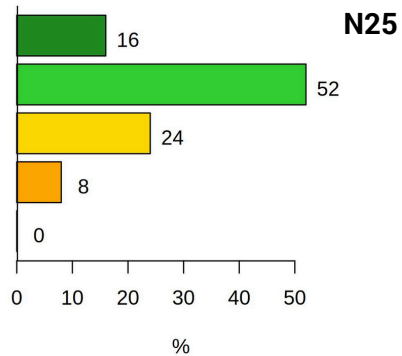
So bewertet Märkisch-Oderland den ÖPNV



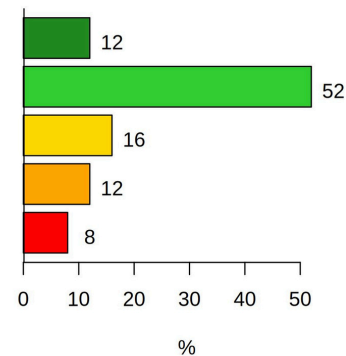
Barrierefreiheit N22



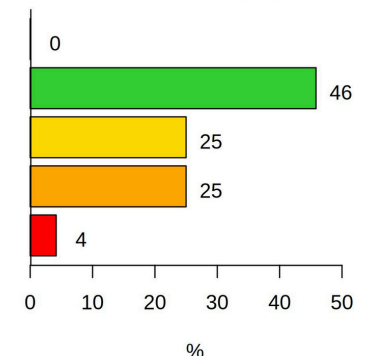
Freundlichkeit des Personals N25



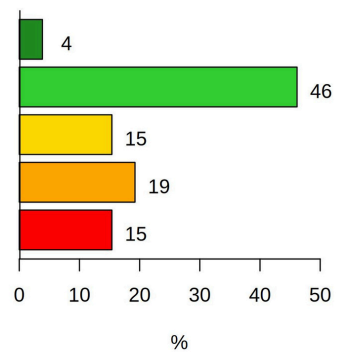
Sicherheit N25



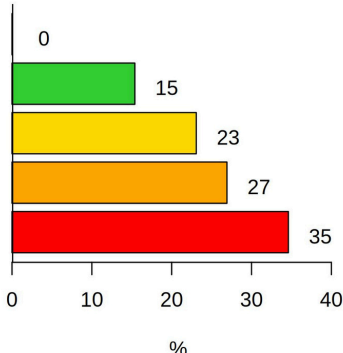
Sauberkeit N24



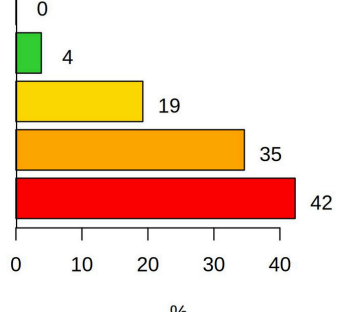
Preis N26



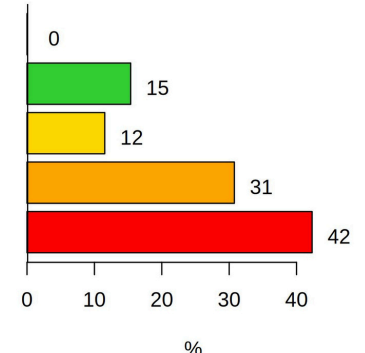
Anschlussicherheit N26



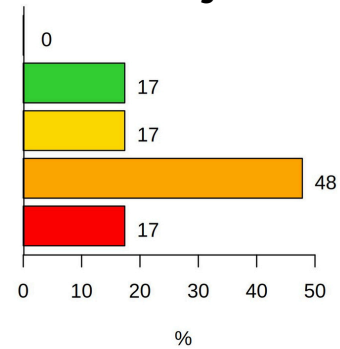
Bedienung in Randzeiten N26



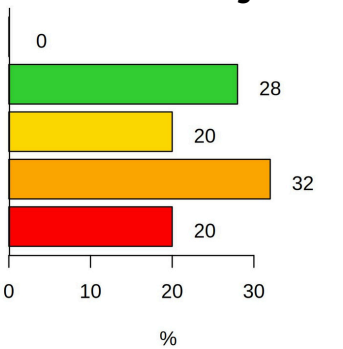
Anzahl der Fahrten N26



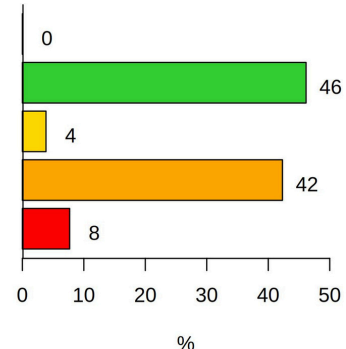
Mitnahmemöglichkeiten N23



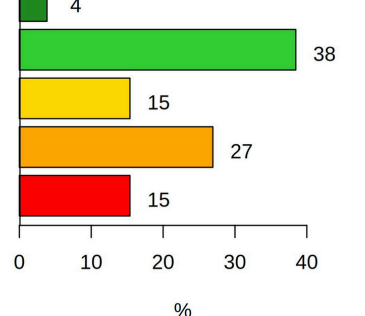
Kombinationsmöglichkeiten N25



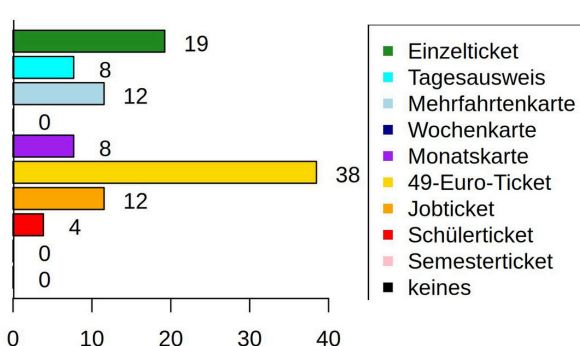
Dauer der Fahrt N26



Erreichbarkeit von Start und Ziel N26



Genutzte Tickets N26



Gründe für die ÖPNV-Nutzung N26

